


2021 IMPACT REPORT

FORWARD WE GO

BADER

PHILANTHROPIES, INC.





Do not go where the
path may lead, go instead
where there is no path
and leave a trail.

- RALPH WALDO EMERSON



MESSAGE FROM OUR PRESIDENT / CEO

Bader Philanthropies is committed to supporting partners who empower people, neighborhoods and our global community.

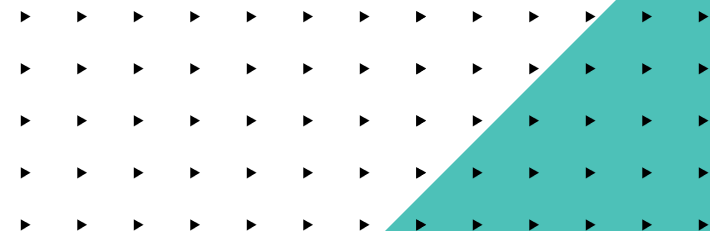
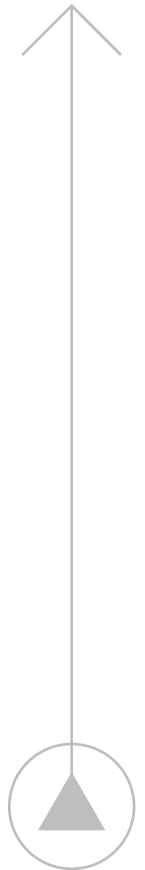
We continue to adapt to and live with the COVID-19 virus. It is a global experience that will forever define our reality for years and decades to come. Our partners have been challenged, but, have found ways to continue supporting others and see possibility. We have heard, seen and witnessed the joy that comes when people learn new skills; find a place to call home or nurture hidden talents.

Through your compassionate service to others, we are reminded that we need to listen intently to everyone without hesitation and always be curious. It is the core of authentic connections in a technology-enabled world. It is the “glue” that binds humanity together.

As we close the year, we hope the pages that follow offer moments to take a step back and celebrate the paths you are making possible.

Best wishes,

Daniel J. Bader





OUR PROGRAMS

“The future belongs to
those who believe in the
beauty of their dreams.”

- ELEANOR ROOSEVELT

ALZHEIMER'S & HEALTHY AGING

TOTAL GRANTS

53

TOTAL DOLLARS

\$1,769,890

\$418,290

Education/Training for Caregivers,
Professionals, and Students


\$950,100

Independence, Wellness,
and Risk-Reduction

\$401,500

Technology and Applied
Research for Program
Development





BRIDGES LIBRARY SYSTEM

Libraries in Waukesha and Jefferson Counties offer opportunities for individuals with memory loss to connect and share their stories through Memory Cafes and its facilitated StoryCorps program.

ALZHEIMER'S- ISRAEL

\$180,000
Public Awareness

\$420,000
Health & Social Services

\$90,000
Applied Research

TOTAL GRANTS

8

TOTAL DOLLARS

\$690,000





NINI CZOPP ASSOCIATION

Holocaust survivors have learned to deal with their traumatic experiences and have adopted lifelong patterns of coping. Israel-based Nini Czopp Association has spent the past few years adapting its programs for the treatment of Dutch Holocaust survivors who live with dementia. The organization provides advice and long-term professional care to clients and guidance to families. Beyond direct services, the Association aims to share its trauma-informed approach with doctors, nurses, social workers and others working to enhance the lives of older Israelis.

SOCIAL EQUALITY

TOTAL GRANTS

39

TOTAL DOLLARS

\$1,858,000

\$542,500

Economic Opportunity
and Employment

\$805,000

Cultural Recognition and
Civic Responsibility

\$510,500

Improving Educational
Opportunities





TUKE.TV

Tuke.TV, z.s., based in the Czech Republic, is dedicated to strengthening and promoting Romani traditions, values, culture and language by creating original and engaging audiovisual content.

EMPLOYMENT

\$460,000

Employment Advancement

\$1,094,500

Employment Preparation

TOTAL GRANTS

37

TOTAL DOLLARS

\$1,829,500

\$275,000

Small Business/Entrepreneurial
Support for Job Creation





WALNUT WAY CONSERVATION CORP.

Walnut Way Conservation Corp. is a resident-led neighborhood organization committed to sustaining an economically diverse community through civic engagement, environmental stewardship, and creating venues for prosperity. Founded by residents, Walnut Way challenges the cycle of poverty in our community by engaging and employing residents to take leadership roles in revitalizing our neighborhood.

PROGRAM RELATED INVESTMENTS

TOTAL PRIs

4

TOTAL DOLLARS

\$2,375,000

\$1,150,000

Investments Leveraged

\$1,225,000

Commercial or Community
Facilities





RIVERBEE

The RiverBee redevelopment project, located between two vibrant and culturally rich Milwaukee neighborhoods, will house 4th Dimension (4D) in an expanded footprint providing safe housing for those who seek sobriety, creating a culture of courage, truth, and hope as they walk a path to a happy destiny.

THE ARTS

TOTAL GRANTS

35

TOTAL DOLLARS

\$1,325,000

\$448,000

Cultural Inclusion

\$872,000

The Arts in Education

\$5,000

Performing Arts





LA FAMILIA DE ARTE

La Familia de Arte serves families on Milwaukee's near southside. The organization focuses on the arts as a central hub for uplifting the community with skilled public art that is enjoyed by all. Students learn how to work in teams, share creative ideas and values, with service to the community as a core guiding principle.

URBAN & JEWISH EDUCATION

\$1,053,700

Jewish Education

\$525,000

Student Excellence

\$265,000

Teacher Training and
Leadership Development

\$25,000

Other

TOTAL GRANTS

31

TOTAL DOLLARS

\$1,868,700





SCHLITZ AUDUBON NATURE CENTER

Schlitz Audubon Nature Center offers meaningful environmental education for the community. The Early Childhood Education Urban Outreach Program provides Milwaukee children, ages 3-5, with access to nature-based learning experiences.



TORAH ACADEMY OF MILWAUKEE

Torah Academy of Milwaukee provides Jewish high school women with a challenging Judaic education that emphasizes the practice of Torah and religious principles, while providing a robust secular education based on critical and creative thinking skills.

YOUTH DEVELOPMENT

TOTAL GRANTS

75

TOTAL DOLLARS

\$2,320,026

\$885,225

Character/Professional
Development

\$928,451

Wellness

\$506,350

Extended Learning
Opportunities





CITY ON A HILL

City on a Hill, located in the heart of Milwaukee, focuses on breaking the cycle of poverty through family centered programs and services. The Youth Center offers youth ages eight to 18 a safe place to participate in after-school activities, including academic tutoring and creative arts sessions.

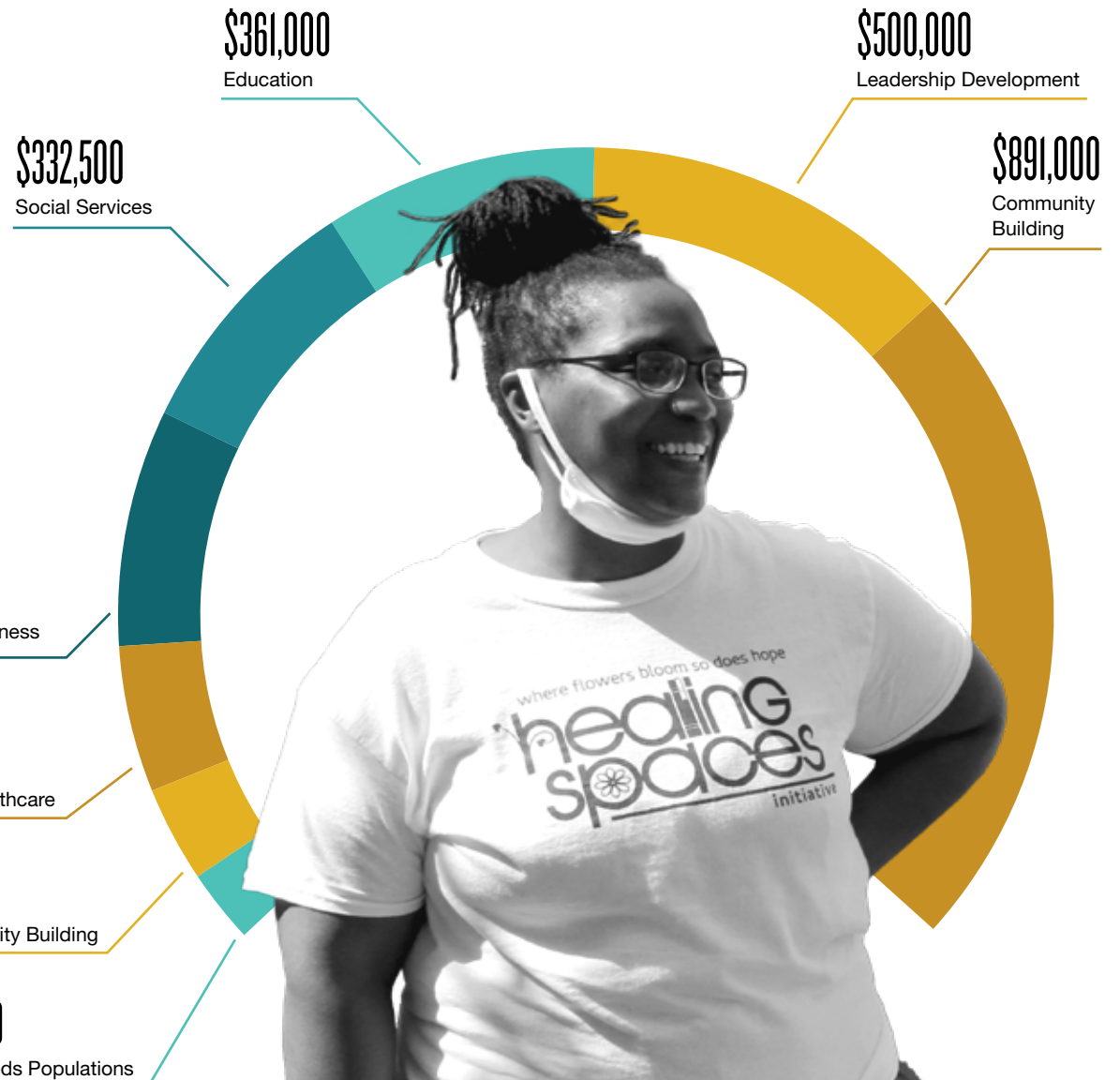
COMMUNITY MATTERS

TOTAL GRANTS

48

TOTAL DOLLARS

\$2,817,000





HEALING SPACES INITIATIVE

This year, the City's Neighborhood Improvement Development Corporation launched the Healing Spaces Initiative in the Harambee neighborhood. The resident-driven projects transform vacant lots into relaxing natural environments where neighbors can gather, children can play and individuals can enjoy the beauty in the place they call home.

NEIGHBORHOOD ENGAGEMENT

TOTAL GRANTS

16

TOTAL DOLLARS

\$264,429

\$115,000

Neighborhood
Improvement

\$20,000

Organizational
Development

\$129,429

Neighborhood Events





MENTOR GREATER MILWAUKEE

Mentor Greater Milwaukee offers youth an opportunity to connect with positive adult role models by working closely with mentoring organizations throughout Milwaukee.

COLLABORATION

ACROSS PROGRAM AREAS

“

*The thankful heart opens
our eyes to a multitude of
blessings that continually
surround us.*

- JAMES E. FAUST

TOTAL GRANTS

13

TOTAL DOLLARS

\$649,000





NEIGHBORHOOD HOUSE

Neighborhood House is a multi-cultural community center providing education, employment training, after school care, and opportunities for youth, teens, and young adults in the Harambee neighborhood.

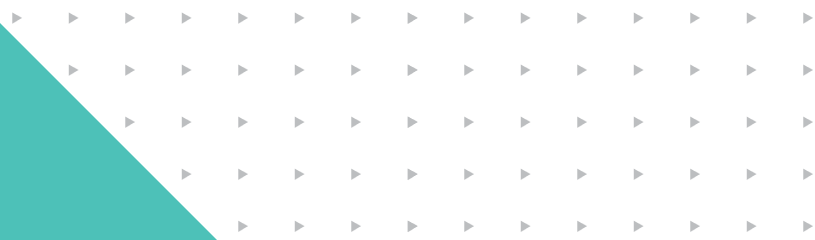
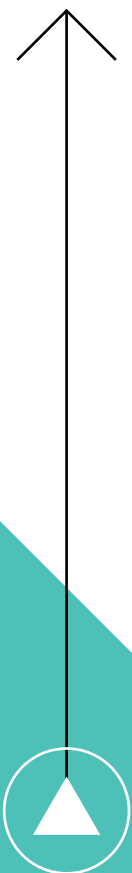
EVENTS

FOR THE COMMUNITY

“

All men are caught in an inescapable network of mutuality, tied in a single garment of destiny. Whatever affects one directly, affects all indirectly. I can never be what I ought to be until you are what you ought to be, and you can never be what you ought to be until I am what I ought to be.

- DR. MARTIN LUTHER KING, JR.





JUNETEENTH DAY

Juneteenth Day was declared a Federal holiday the day before Milwaukee's Northcott Neighborhood House, organized the 50th annual commemoration of Juneteenth. The event included the first ever live broadcast of the parade, a Kids Zone with games, a petting zoo, and rides in the Dr. Martin Luther King, Jr. Elementary School parking lot, along with 300 information booths and food vendors lining seven city blocks. In a normal year, all of this activity would definitely call attention. But, it takes on special significance this year coming out of a global pandemic, economic challenges and civil unrest.



TAKE AWAY BBQ

Neighbors gathered in the fall of 2020 and summer of 2021 for TakeAway BBQs to strengthen the bonds that connect us while breaking bread in socially distanced ways.



GREEN RING II 3805 N MLK Drive

BADER
PHILANTHROPIES, INC.

CELEBRATING
JUNETEENTH DAY

BADER
PHILANTHROPIES, INC.

OUR IMPACT



In order to be great, you
have to care. You have to
care about your world,
community, and equality.

- KATORI HALL

IMPACT SNAPSHOT



- OCTAVIO PAZ

In the Fall & Spring of FY 2021,
277 grants served an estimated...



173,476
INDIVIDUALS



103,084
STUDENTS



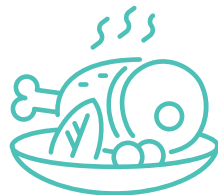
99,907
YOUTHS



6,258
OLDER ADULTS



634,200
ATTENDEES AT
997 EVENTS
(VIRTUAL AND
IN-PERSON)



25,000+
HEALTHY MEALS
PROVIDED



3,831
YOUTH WERE
PAIRED UP
WITH MENTORS



3,983
OLDER ADULTS
WERE ABLE TO
STAY IN THEIR
OWN HOMES

We gave **\$3.66 million** in general operating support through **17 grants**

Our dollars were leveraged to raise **\$5.41 million** from other donors



grant highlights

619 INDIVIDUALS
PLACED DIRECTLY
IN EMPLOYMENT

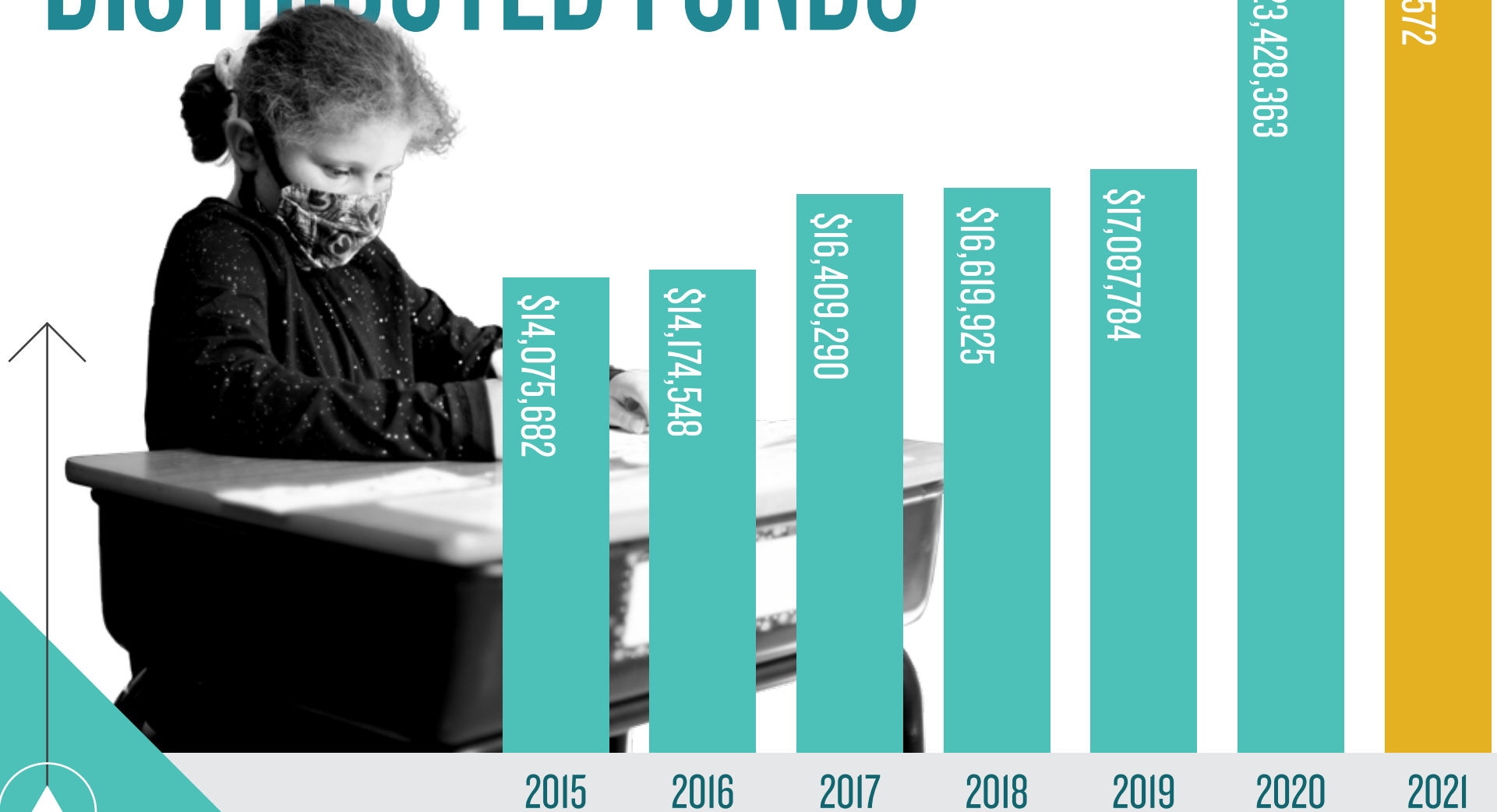
186 JOBS
CREATED

301 SCHOLARSHIPS
AWARDED TOTALING
\$679,350

238 PARTNERSHIPS
MADE BETWEEN
ORGANIZATIONS



DISTRIBUTED FUNDS



APPROVED FUNDING BY PROGRAM AREA

TOTAL APPROVED FUNDING:

\$25,459,657

\$1,829,500

Employment

\$1,202,000

Directed Grants

\$2,817,000

Community Matters

\$690,000

Alzheimer's - Israel

\$1,769,890

Alzheimer's & Healthy Aging

\$649,000

Collaborative Grants

\$5,491,112

Legacy

\$1,000,000

Major Gifts

\$264,429

Neighborhood Engagement

\$2,375,000

Program Related Investments

\$1,858,000

Social Equality

\$1,325,000

The Arts

\$1,868,700

Urban & Jewish Education

\$2,320,026

Youth Development



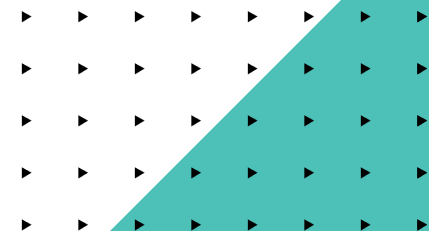


2021 GRANTS & PRIS

*Program Related Investment(s)

**Program Related Investment(s) & Grant(s)

2 Fish Home Renovations	Ara Art, z.s.	Bokra Guide - Association for the Development of Communication Strategies in the Israeli Arab Society (a.r.)	Civic Music Association of Milwaukee
50 50 Startups, Inc.	Arous Elbahar Association for Women in Jaffa (RA)	Brady Center to Prevent Gun Violence	COA Youth and Family Centers, Inc.
A.F.A.R., Inc.	Arts at Large, Inc.	Britain Yearly Meeting of the Religious Society of Friends (Quakers)	College Possible
Above the Clouds, Inc.	ArtWorks For Milwaukee, Inc.	Broadscope Disability Services, Inc.	Colliers Training Institute, Inc.
Acco Theatre Center (a.r.)	Ashland County Aging Unit, Inc.	Canadian Society for Chemistry, Organic Division	CommonBond Communities
ACTS Community Development Corporation	Ashuja'an Association for Juvenile Diabetes (a.r.)	Carmen High School of Science and Technology, Inc.	Concordia University
ADMA (R.A.)	Association for the Integration of Minorities	Catholic Charities of the Archdiocese of Milwaukee, Inc.	Cream Skills, Inc.
Adult Learning Center, Inc.	Association of Ethiopian Jews (a.r.)	Catholic Charities, Inc. Diocese of Madison	Curtain Call - Theater, Community, Society (r.a.)
Alianza Latina Aplicando Soluciones, Inc.	Association of Friends of the Israel Museum in Jerusalem (a.r.)	Causeway Interfaith Volunteer Caregivers, Inc.	Cyril Mooney Education, z.s.
All 4 Kidz, Inc.	Atonement Community and Education Services, Inc.	Center For Community Stewardship, Inc.	Dementia Friendly Community Initiative, Inc.
All Hands Boatworks, Inc.	Audio & Braille Literacy Enhancement, Inc.	Central European University	Discovery World, Ltd.
All-In Milwaukee, Inc.	Austrian Academy of Sciences	Centro Hispano, Inc.	DogsInVests, Inc.
Alma Center, Inc.	Authorized Training Center of Prof. R. Feuerstein Methods, z.u.	Cesta von o.z.	Down Syndrome Association of Wisconsin, Inc.
AlManarah - Association for the Advancement of Disabled Persons (a.r.)	Autism Society Southeastern Wisconsin, Inc.	Chabad Lubavitch of Doylestown	Dr. James Cameron Legacy Foundation, Inc.
ALYN Hospital - Pediatric & Adolescent Rehabilitation Center (a.r.)	Awen Amenca, z.s.	Chabad Lubavitch of Waukesha	Eastbrook Academy, Inc.
Alzheimer's Disease International-The International Federation of Alzheimer's Disease and Related Disorders	Bader Hillel High, Inc.	Citizens Build a Community (a.r.)	EMDA - Dementia, Alzheimer's and Related Diseases Association of Israel (a.r.)
American Friends of The Hebrew University, Inc.	Bar-Kayma for Culture, Art, Music, and Peace (a.r.)	City of Milwaukee	
American Jewish Joint Distribution Committee, Inc.	BEAMING, Inc.	City of Waupaca - Waupaca Senior Center	
American Parkinson Disease Association - Wisconsin Chapter	Best Buddies International, Inc.	City On A Hill, Inc.	
Amery Area Senior Citizens, Inc.	Beyond Vision, Inc.	City Year, Inc.	
	BizStarts Milwaukee, Inc.	Civic Leadership (a.r.)	
	Black Arts MKE, Inc.		



GRANTS & PRIS

ERAS Senior Network, Inc.
ETP Slovakia - Center for Sustainable Development
Ex Fabula, Inc.
Faculty of Arts, Charles University
Faith in Action of Marathon County, Inc.
Family Caregiver Alliance
Feast of Crispian, Inc.
Federation of Jewish Communities of Romania
Feeding America Eastern Wisconsin, Inc.
FIDEL Association for Education and Social Integration of Ethiopian Jews in Israel (a.r.)
First Stage Milwaukee, Inc.
Forum of Arab Cultural Organizations (r.a.)
Foundations Health & Wholeness, Inc.
Franciscan Peacemakers, Inc.
Friends of Schlitz Audubon Nature Center, Inc.
Friendship Circle Delaware Valley North, Inc.

Future Urban Leaders Foundation, Inc.
Gateway Capital Partners, LLC*
General Capital Group, LLP*
GiGi's Playhouse-Milwaukee, LLC
Girl Scouts Of Wisconsin Southeast, Inc.
God Touch Milwaukee, Inc.
GPS Education Partners, Inc.
Grand Avenue Club, Inc.
Greater Galilee Community Development Corporation
Greater Milwaukee Committee for Community Development
Greater Milwaukee Foundation, Inc.
Growing Minds, Inc.
Hadassah Academic College (a.r.)
HaMiffal - Cooperative Society, Ltd.
Harry and Rose Samson Family Jewish Community Center, Inc.
Health Connections, Inc.
HEAR Wisconsin, Inc.
Heartlove Place, Inc.
Highland Community School, Inc.
Hillel Academy, Inc.
HIR Wellness Institute, Inc.*
Hmong American Peace Academy, Ltd.
Hmong/American Friendship Association, Inc.

Hope House of Milwaukee, Inc.
Hope Street Ministry, Inc.
Hotline for Refugees and Migrants (a.r.)
Imagine MKE, Inc.
Impact Cubed
IndependenceFirst, Inc.
Inner-City-Computer Stars Foundation, Inc.
Institute of Contemporary History of the Czech Academy of Sciences
Institute of Ethnology
Interfaith Caregivers of Ozaukee County, Inc.
Interfaith Caregivers of Washington County, Inc.
Interfaith Volunteer Caregivers of Burnett County, Inc.
IQ Roma servis (z.s.)
Islands of Brilliance, Inc.
Israel Elwyn (a.r.)
Jacarrie Kicks For Kids, Inc.
Jackson County Interfaith Volunteer Caregivers, Inc.
Jerusalem African Community Center
Jerusalem Culture Unlimited (a.r.)
Jerusalem J.E.H.S. School, Ltd. (CC)
Jewish Beginnings Lubavitch Preschool, Inc.
Jewish Funders Network

Jewish Home & Care Center Foundation, Inc.
JFS Housing, Inc.
Joint Israel (PBC)
Joyce's House of Milwaukee, Inc.
Junior Achievement of Wisconsin, Inc.
Just One More Ministry, Inc.
Kav Laoved (a.r.)
Kav Mashve (a.r.)
Kenosha Area Family and Aging Services, Inc.
KHER, z.s.
Kids Matter, Inc.
Kulna Jerusalem (a.r.)
L.A. Mayer Museum for Islamic Art (a.r.)
La Causa, Inc.
La Familia De Arte, Inc.
Labor for Learning, Inc.
Lad Lake, Inc.
Latino Arts, Inc.
Lauder's Kindergarten, Elementary School and Grammar School at the Jewish Community in Prague
Layton Boulevard West Neighbors, Inc.
Lead2Change, Inc.
Legal Aid Society of Milwaukee, Inc.
Lifestriders, Inc.
Local Initiatives Support Corporation



Locomotion Dance Company	Midwest Energy Research Consortium, Inc.	Milwaukee Simba S.C., Inc.	Operation DREAM, Inc.
Love Thy Neighbor Foundation, Inc.	Milwaukee Area Technical College Foundation, Inc.	Milwaukee Symphony Orchestra, Inc.	ORANIM - Academic Institution for Education of the Kibbutz Movement (a.r.)
Lubavitch of Wisconsin, Inc.	Milwaukee Art Museum, Inc.	Milwaukee Tennis & Education Foundation, Inc.	Pasparta Publishing, s.r.o.
Lutheran Counseling and Family Services of Wisconsin, Inc.	Milwaukee Ballet Company, Inc.	MKE Youth Sports Alliance, Inc.	Pathfinders Milwaukee, Inc.
Lutheran Social Services of Wisconsin and Upper Michigan, Inc.	Milwaukee Center for Independence, Inc.	MMAC Community Support Foundation, Inc.	Peace Learning Center of Milwaukee, Inc.
Maccabi Healthcare Services	Milwaukee Christian Center, Inc.	Mount Hermon Missionary Baptist Church, Inc.	PEARLS for Teen Girls, Inc.
MacCanon Brown Homeless Sanctuary, Inc.	Milwaukee Community Business Collaborative, Inc.	Museum of Romani Culture	Penfield Children's Center, Inc.
Malta Conferences Foundation	Milwaukee Community Service Corps, Inc.	National Gallery of Canada Foundation	Phoenix Multisport, Inc.
Marcus Center for the Performing Arts, Inc.	Milwaukee Environmental Consortium, Inc.	Nativity Jesuit Academy, Inc.	Pitchon Lev (a.r.)
Marquette University	Milwaukee Film, Inc.	Nazareth Nursery Institute (a.r.)	Playworks Education Energized
MARVA-Law, Welfare & Empowerment (a.r.)	Milwaukee Homeless Veterans Initiative, Inc.	Neighborhood House of Milwaukee, Inc.	Post Bellum, z.ú.
Mati Center for Fostering Initiatives and Business Development Center Jerusalem (a.r.)	Milwaukee Jewish Day School, Inc.	Neighborhood Improvement Development Corporation, Inc.	Prism Economic Development Corporation (Prism EDC)
Medical Center Foundation of Hartford, Inc.	Milwaukee Kickers Soccer Club, Inc.	New Beginnings Are Possible, Inc.	Professional Firefighters of Wisconsin Charitable Foundation, Inc.
MEET - Middle East Education Through Technology (a.r.)	Milwaukee Metropolitan Sewerage District	New Israel Fund	Project R.E.T.U.R.N., Inc.
Melabev-Community Center for Eldercare (a.r.)	Milwaukee Opera Theatre, Inc.	NewThreads of Hope, Inc.	Public Allies, Inc.
MENTOR Greater Milwaukee, Inc.	Milwaukee Public Library Foundation, Inc.	Next Act Theatre, Inc.	Queen's University at Kingston
Mequon Nature Preserve, Inc.	Milwaukee Public Museum, Inc.	Nia Imani Family, Inc.	Radio Milwaukee, Inc.
Merchavim - The Institute for Shared Citizenship in Israel (a.r.)	Milwaukee Public Schools Foundation, Inc.	Nini Czopp Association (a.r.)	Rainbow Hospice Care, Inc.
Messmer Catholic Schools, Inc.	Milwaukee Public Schools-Dr. Martin Luther King, Jr. Elementary School	Northcott Neighborhood House, Inc.	Reading & Math, Inc.
Meta House, Inc.	Milwaukee Repertory Theater, Inc.	Notre Dame School of Milwaukee, Inc.	Relief International
Metropolitan Area Agency on Aging	Milwaukee Robotics Academy, Inc.	Ogen - Free Loan Fund (r.a.)	Renaissance Theaterworks, Inc.
		Olim Beyahad - Bandelay Woodelay, Leadership and Employment Excellence for Ethiopian University Graduates (a.r.)	Revitalize Milwaukee, Inc.
		OpenEye, o.s.	Richland Center-Santa Teresa Sister City Project, Inc.
			River Revitalization Foundation, Inc.

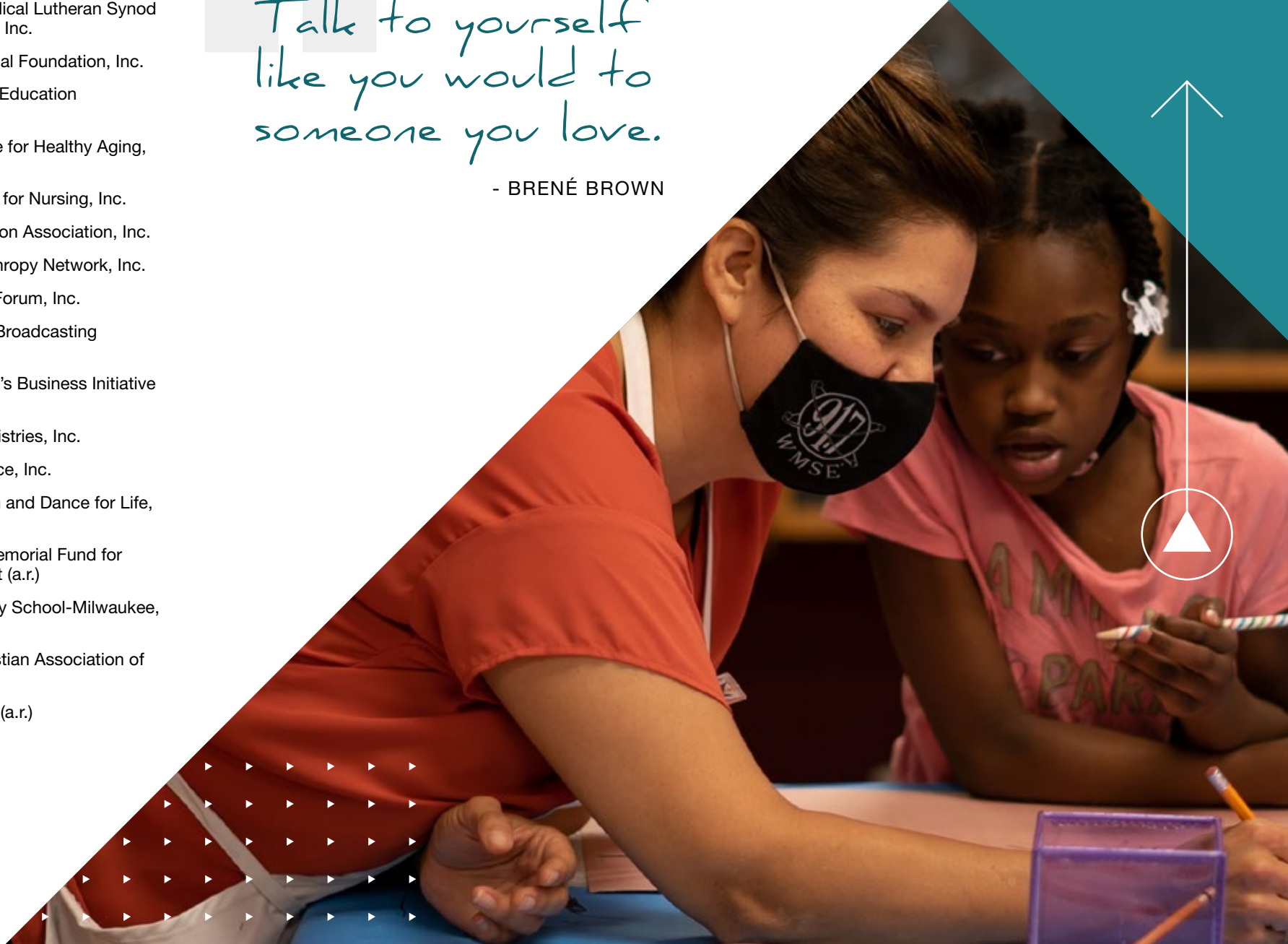
GRANTS & PRIS

RiverBee, LLC*	St. Joan Antida High School, Inc.	The Milwaukee Jewish Federation, Inc.	Tinicum Conservancy
Riveredge Nature Center, Inc.	Stand in the Light Memory Choir, Inc.	The Milwaukee Rescue Mission	Tishreen for the Advancement of Culture in Taybeh (a.r.)
Riverwest Artists Association, Inc.	Street Angels, Inc.	The Milwaukee Teacher Education Center, Inc.	Top Ladies of Distinction, Inc.
Rocketship Education Wisconsin, Inc.	Studio K Flamenco, Inc.	The Mooring Programs, Inc.	Torah Academy of Milwaukee for Girls, Inc.
ROMEA, o. p. s.	Studio of Her Own - Center for Creative Women Artists (a.r.)	The National Library of Israel, Ltd. (CC)	Tovanot Behinuch (a.r.)
Ruach Tzeira (a.r.)	Summit Educational Association, Inc.	The New Horizon Center, Inc.	TRUE Skool, Inc.
Ruach, Inc.	Summit Players Theatre, Inc.	The OccuPaws Guide Dog Association	Tuke.TV, z.s.
Safe & Sound, Inc.	Tamar - Interdisciplinary Center (a.r.)	The Olga Lengyel Institute for Holocaust Studies and Human Rights	United Community Center, Inc.
SaintA, Inc.	TBEY Arts Center, Inc.	The Parenting Network, Inc.	United Neighborhood Centers Of Milwaukee, Inc.
Sanad Association - Mentoring and Volunteering (a.r.)	TECH2PEACE (R.A.)	The Poetry Center of Chicago	United States Holocaust Memorial Museum
Scouting Slovakia	Teens Grow Greens, Inc.	The Professional Dimensions Charitable Fund, Inc.	Via Foundation
SecureFutures Foundation, Inc.	Tenufa Bakehila (a.r.)	The Rembrandt House Museum	Victoria University
Seeds of Health, Inc.	The Best Camp, Inc.	The Running Rebels Community Organization, Inc.	Victory Garden Initiative, Inc.
Serenity Inns, Inc.	The Caring Place, Inc.	The Salvation Army - Green Bay	Volunteer Center of Washington County, Inc.
Serving Older Adults of Southeast Wisconsin, Inc.	The Cathedral Center, Inc.	The Sophie and Abram Stuchynski Israeli Alzheimer Medical Center Ramat Gan (a.r.)	Walker's Point Youth and Family Center, Inc.
Shalem Healing, Inc.	The Donna Lexa Community Art Centers, Inc.	The United Sports Club, Inc.	Walnut Way Conservation Corp.
SHARP Literacy, Inc.	The Education, Culture, and Neighborhood Renewal Company in Tel Aviv founded by the Jewish Agency of Israel (PBC)	The UWM Foundation, Inc.	Washington Island Community Health Program, Inc.
Silver Spring Neighborhood Center, Inc.	The Friendship Circle, Inc.	The Waldorf School Association of the Delaware River Valley	Waukesha County – Bridges Library System
Skyrocket Education, Inc.	The Gathering of Southeast Wisconsin, Inc.	The Women's Center, Inc.	We Will All Rise, Inc.
Slovo 21, z. s.	The Jerusalem Foundation (a.r.)	Three Harbors Council, Inc., Boy Scouts of America	Westcare Wisconsin, Inc.
Sojourner Foundation, Inc.	The Jewish Community of Prague	Tikkun Ha-Ir of Milwaukee, Inc.	Western Dairyland Economic Opportunity Council, Inc.
Solomon Community Temple United Methodist Church, Inc.	The Life Center, Inc.		Wisconsin African American Women, Ltd.
St. Ann Center for Intergenerational Care, Inc.	The Medical College of Wisconsin, Inc.		
St. Coletta of Wisconsin, Inc.			

Wisconsin Community Services, Inc.
Wisconsin Conservatory of Music, Inc.
Wisconsin Evangelical Lutheran Synod
Kingdom Workers, Inc.
Wisconsin Historical Foundation, Inc.
Wisconsin Inmate Education
Association, Inc.
Wisconsin Institute for Healthy Aging,
Inc.
Wisconsin League for Nursing, Inc.
Wisconsin Parkinson Association, Inc.
Wisconsin Philanthropy Network, Inc.
Wisconsin Policy Forum, Inc.
Wisconsin Public Broadcasting
Foundation, Inc.
Wisconsin Women's Business Initiative
Corporation
Word of Hope Ministries, Inc.
Workforce Resource, Inc.
Xalaat Africa Drum and Dance for Life,
Ltd.
Yehuda Tribitch Memorial Fund for
Social Involvement (a.r.)
Yeshiva Elementary School-Milwaukee,
Inc.
Young Men's Christian Association of
Dane County, Inc.
Yuval Susan Fund (a.r.)

Talk to yourself
like you would to
someone you love.

- BRENÉ BROWN



BADER PHILANTHROPIES

BOARD & STAFF



DANIEL J. BADER

President/CEO, Board of Directors
Advisory Committee Member:
Helen Daniels Bader Fund
Isabel & Alfred Bader Fund



DAVID M. BADER

Vice President, Board of Directors
Advisory Committee Member:
Helen Daniels Bader Fund
Isabel & Alfred Bader Fund



ISABEL BADER

Advisory Committee Member:
Isabel & Alfred Bader Fund



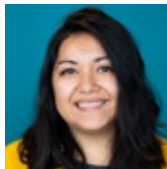
LINDA C. BADER

Board of Directors
Advisory Committee Member:
Helen Daniels Bader Fund
Isabel & Alfred Bader Fund



MICHELLE BERRONG BADER

Board of Directors
Advisory Committee Member:
Helen Daniels Bader Fund
Isabel & Alfred Bader Fund



SANDRA BEDNARZ

Properties & Logistics Manager



DEIRDRE H. BRITT

Secretary, Board of Directors
Advisory Committee Chair:
Helen Daniels Bader Fund



BEN L. CALLIF

Research & Mindset Director



FRANK E. CUMBERBATCH

Vice President - Engagement



MARGARET FOSTER

Board of Directors
Advisory Committee Chair:
Isabel & Alfred Bader Fund



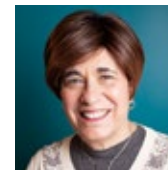
MERILOU V. GONZALES

Communications Director



BRIDGETT GONZALEZ

Program Officer



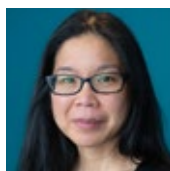
LISA G. HILLER

Vice President - Administration

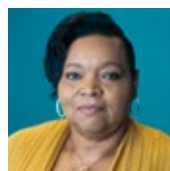


TAMARA LYNETTE HOGANS

Community Engagement Officer



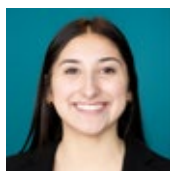
KRISTEN LIE
Grants Manager



LINDA K. RUCKER
Financial Administrator



MARIA LOPEZ VENTO
Vice President - Grants
& Impact Investments



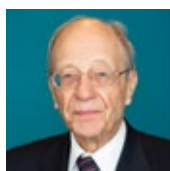
CLAUDIA MARTINEZ
Program Associate



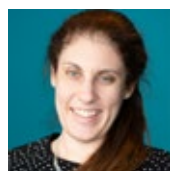
DENA SAFER
Israel Logistics Coordinator



BRANDON WIGLEY
Program Officer



JERE D. MCGAFFEY
Chair/Treasurer, Board of Directors
Advisory Committee Member:
Helen Daniels Bader Fund
Isabel & Alfred Bader Fund



ADINA SHAPIRO
Board of Directors
Advisory Committee Member:
Isabel & Alfred Bader Fund



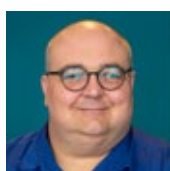
FRANCES KLITSNER WOLFF
Board of Directors
Advisory Committee Member:
Helen Daniels Bader Fund



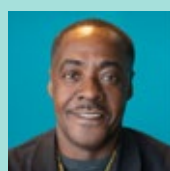
HELEN RAMON
Senior Program Officer



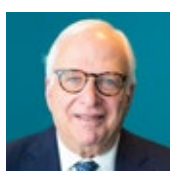
KIM THAO
Enterprise Systems Director



BRIAN REPINSKI
Information Technology
& Systems Director



FRANKIE THOMAS
Safety Coordinator



JEFFREY ROSEN
Program Officer



ROBERT TOBON
Program Officer

INTERNS

KEYANNA BELL
Engagement Administrative Intern

LEXI PORRAS
Social Media &
Communications Intern

MARTHA GHEBREGZIABIHER
Office Assistant Intern

AUDREY ROTH
Social Media &
Communications Intern

TOVA HANDLER
Office Assistant Intern

ISABELLE SHAVLIK
Social Media &
Communications Intern

DAEJA HOLLINS
Program Administrative Intern

JACINDA LUANGKHOT
Program Administrative Intern

MADELINE TAPHORN
Social Media &
Communications Intern

ESTIE MEISTER
Office Assistant Intern

SOFIA WALZ-CHOJNACKI
Office Assistant Intern

BADER PHILANTHROPIES, INC.

3300 N. Dr. Martin Luther King, Jr. Drive | Milwaukee, WI 53212

414-224-6464 | www.bader.org

Photo Credits: Debbi Cooper, Hmong/American Friendship Association, Nini Czopp Association,
Pat A. Robinson, Schlitz Audubon Nature Center, Tuke TV and Vogue Dreams Pro